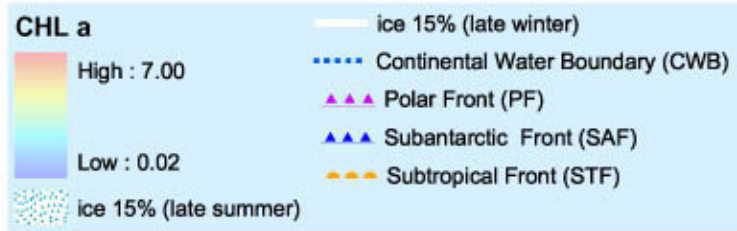
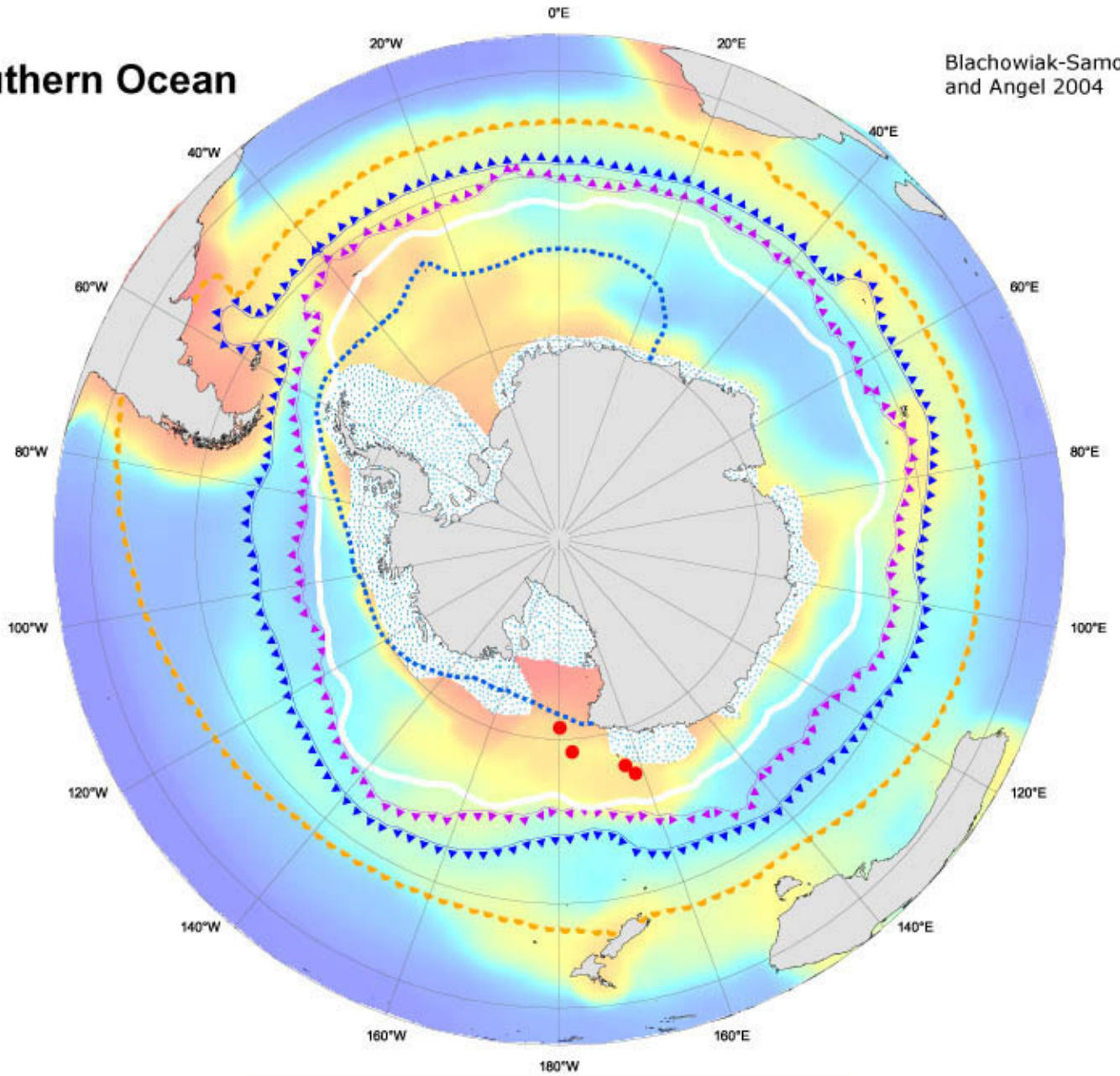


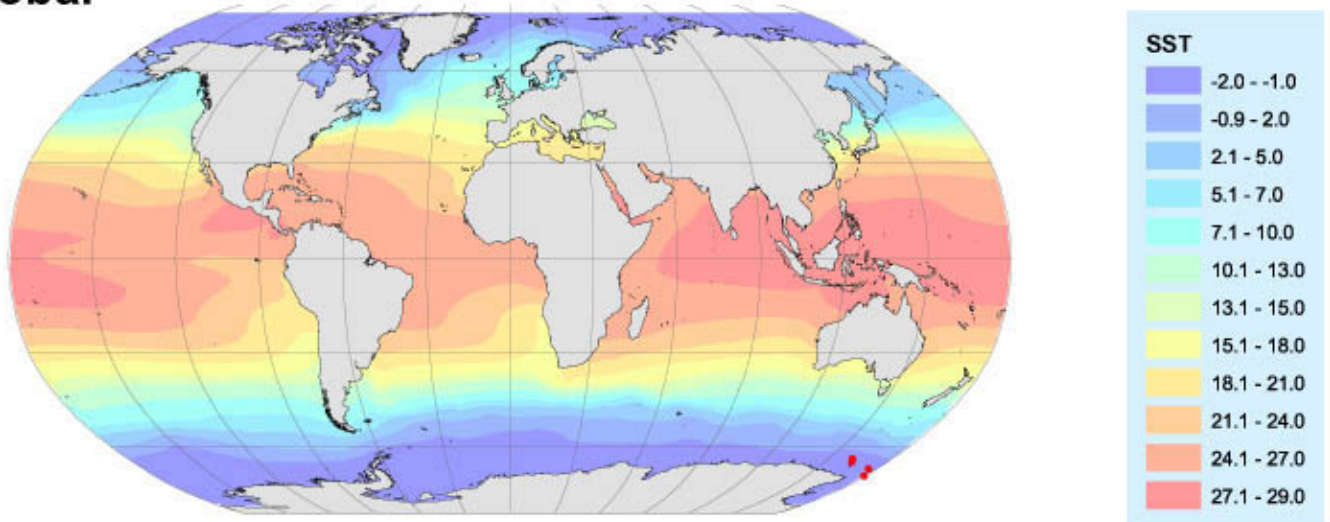
● *Procerocia rivotella*

Southern Ocean

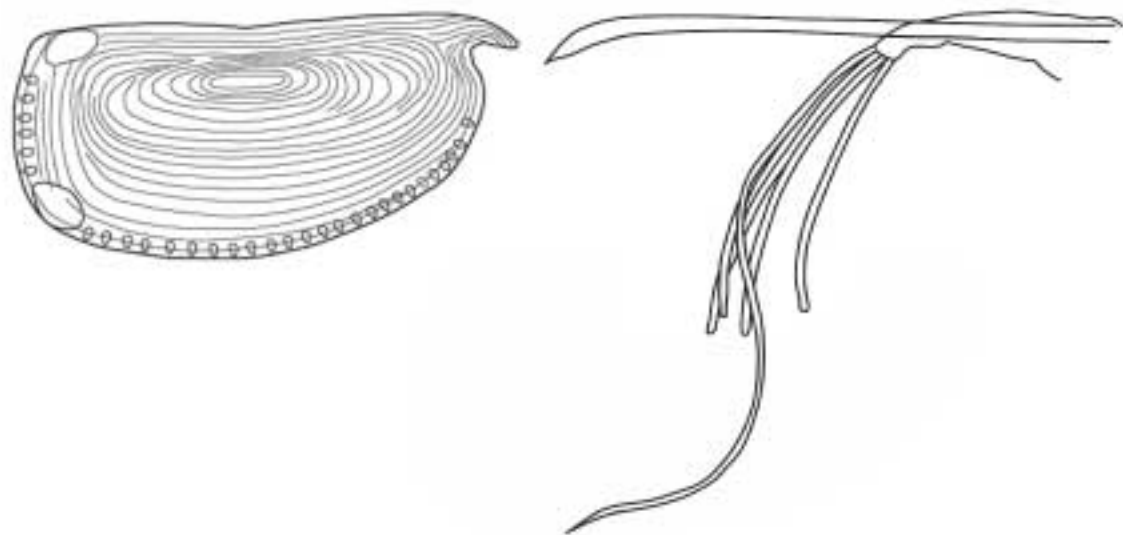
Blachowiak-Samolyk and Angel 2004



Global



Procerocia rivotella



Key to drawings

Adult carapaces (A,B females, C,D males)

Details of the first antennae and frontal organs and the endopodite of the left second antennae of females (E and F) and males (G and H)

Details of the armature of the male first antenna setae (I).

Proceroecia rivotella McKenzie and Benassi, 1994

Records: 4

This species has only been recorded from material collected during a single expedition in waters close to the Antarctic land mass in the Ross Sea. Whether it is restricted to the Ross Sea Gyre or, like *Alacia belgicae*, it is another species that is restricted to waters close to or even beneath the ice shelf will have to await further investigations.

	n	Mean mm	s.d.	Range mm
Female	4	1.54		1.42-1.59
Male	3	1.47		1.40-1.53
A-1	3	1.25		1.24-1.27
A-2	1	1.18		1.18
A-3				