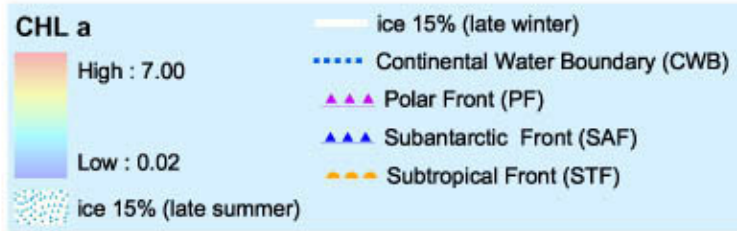
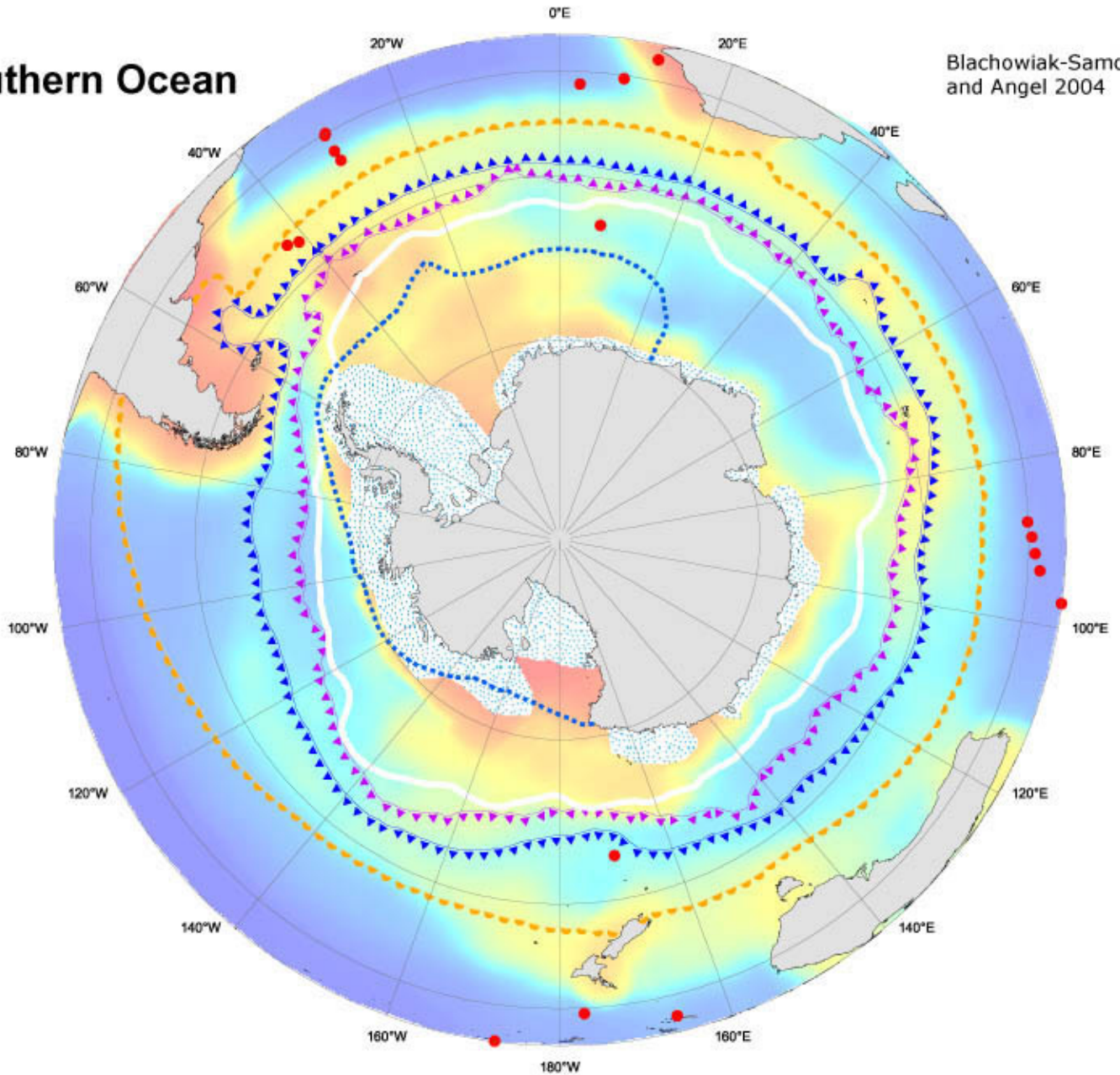


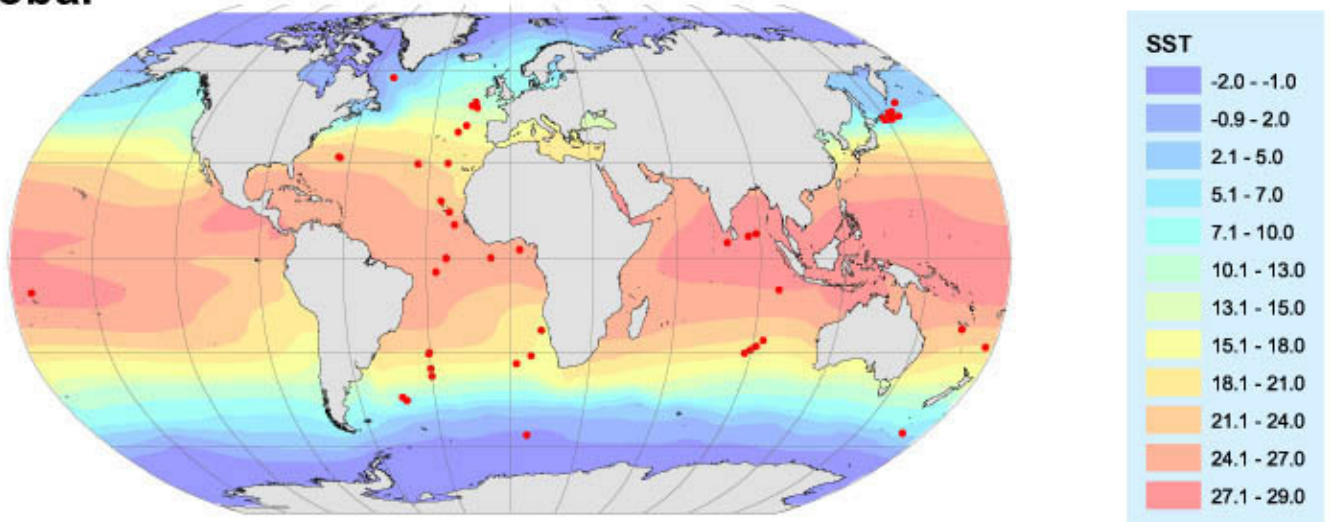
● *Paraconchoecia mamillata*

Southern Ocean

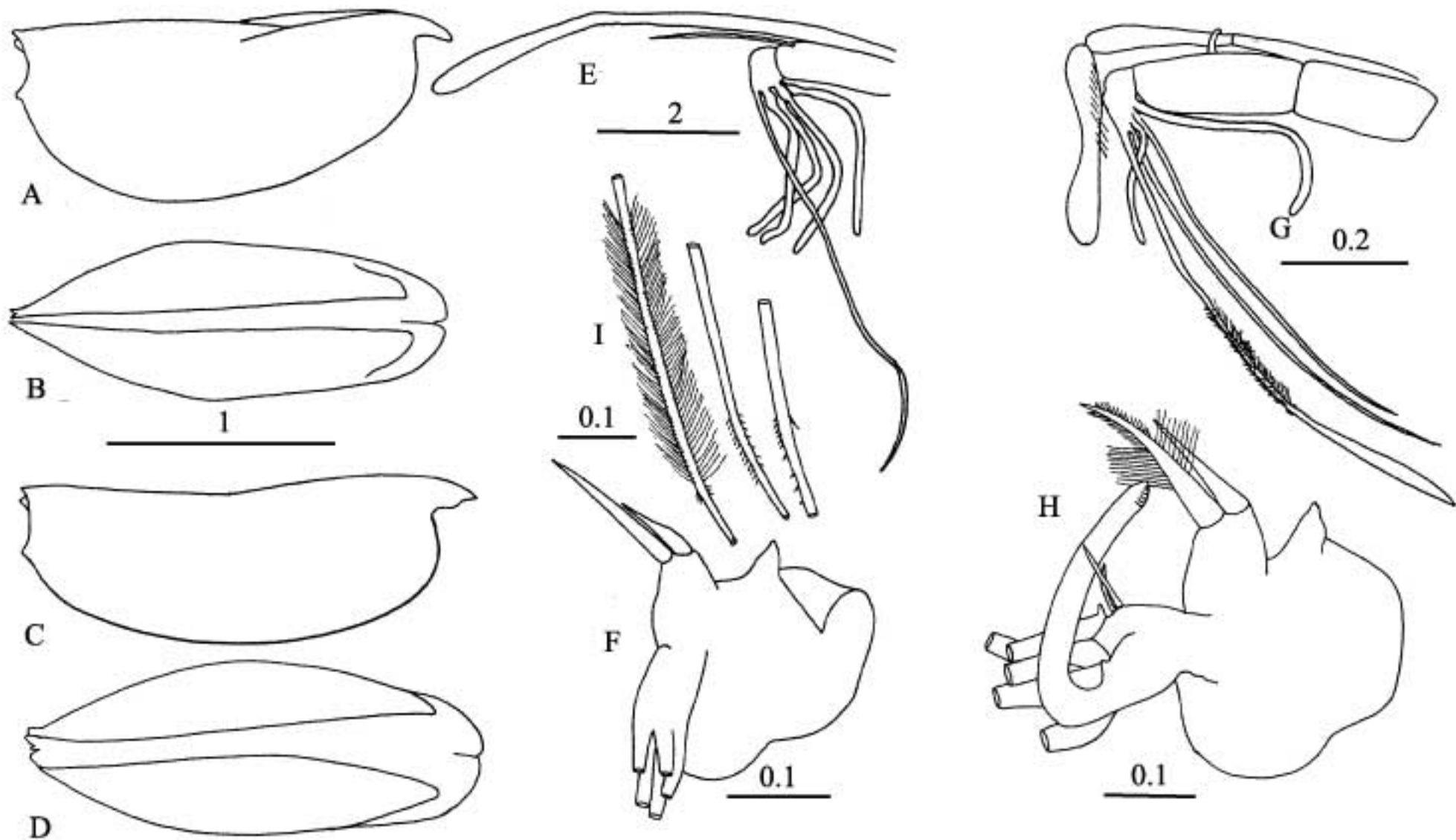
Blachowiak-Samolyk and Angel 2004



Global



Paraconchoecia mamillata



Key to drawings

Adult carapaces (A,B females, C,D males)

Details of the first antennae and frontal organs and the endopodite of the left second antennae of females (E and F) and males (G and H)

Details of the armature of the male first antenna setae (I).

Paraconchoecia mamillata (Müller, G.W., 1906)

Records: 53

This is a deep mesopelagic/bathypelagic species that is instantly recognizable by the tubercles on the posterior margins of the carapace. It has been widely but infrequently reported from all oceans and there are a very few records from the Southern Ocean. Two size forms of this species were originally reported in the North Atlantic; the smaller form is deep mesopelagic and the larger form is deep bathypelagic. Deevey and Brooks (1980) split the smaller form from the typical species, naming it *Paraconchoecia (Conchoecia) nanomamillata*. The sizes of the few Southern Ocean specimens available to us are consistent with those of the large form collected from high latitudes in the North Atlantic as shown below.

| N. Atlantic | n | Mean mm | s.d. | Range mm |
|--------------------|----------|----------------|-------------|-----------------|
| Female | 136 | 1.72 | 0.096 | 1.50-1.90 |
| Male | 65 | 1.67 | 0.063 | 1.50-1.79 |
| A-1 | 78 | 1.34 | 0.075 | 1.18-1.50 |
| A-2 | 16 | 1.09 | 0.048 | 1.02-1.16 |
| A-3 | 35 | 0.93 | 0.031 | 0.88-1.00 |
| A-4 | 10 | 0.81 | 0.022 | 0.78-0.84 |