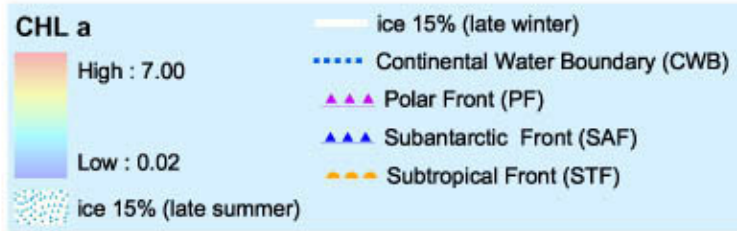
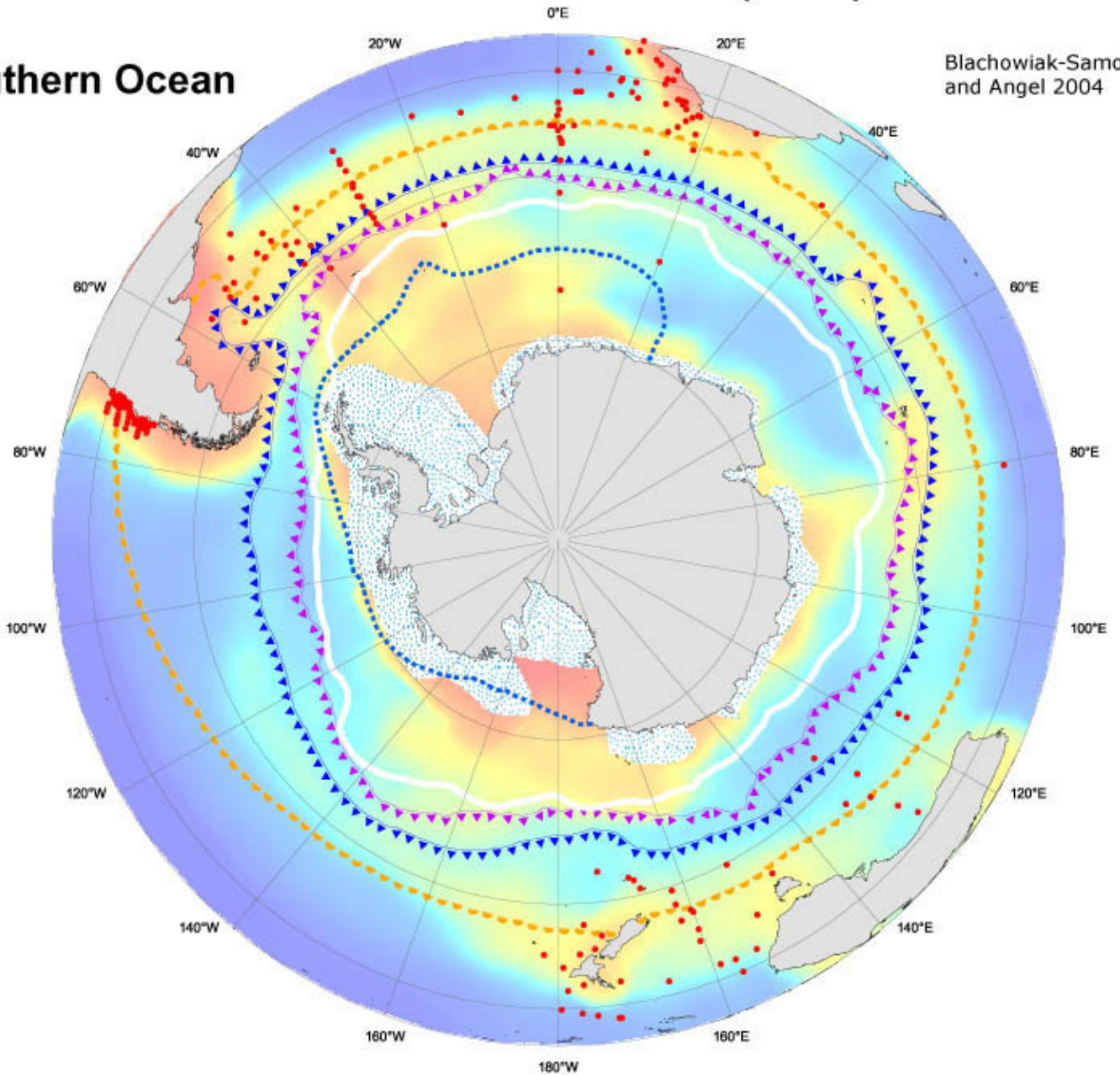


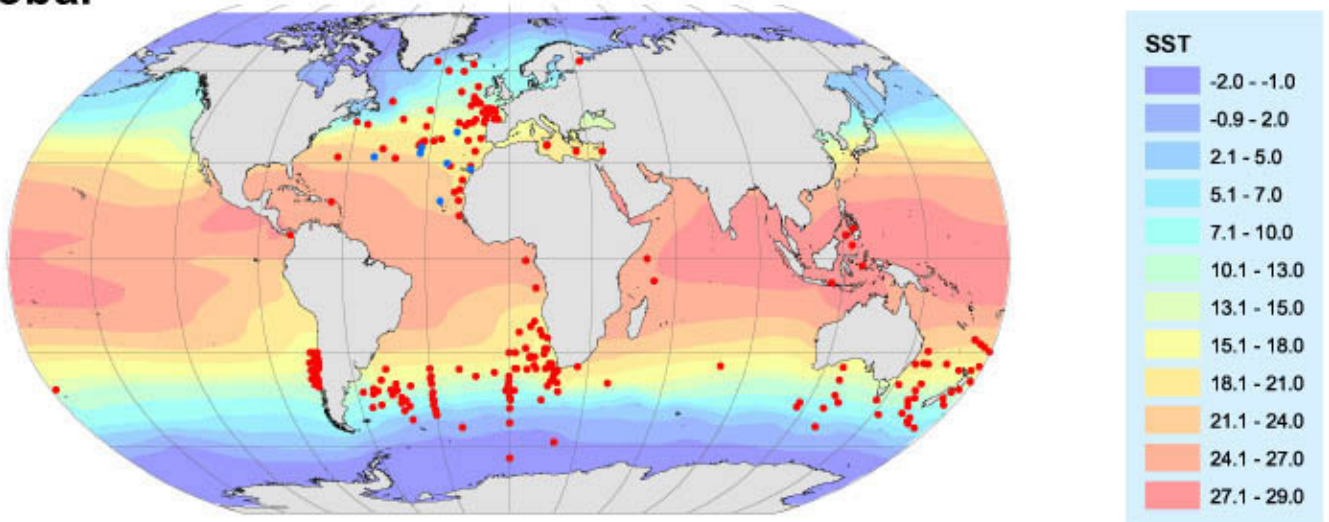
● *Orthoconchoecia haddoni* (● -s)

Southern Ocean

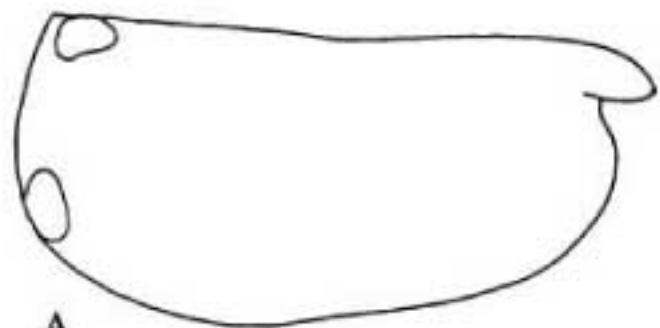
Blachowiak-Samolyk and Angel 2004



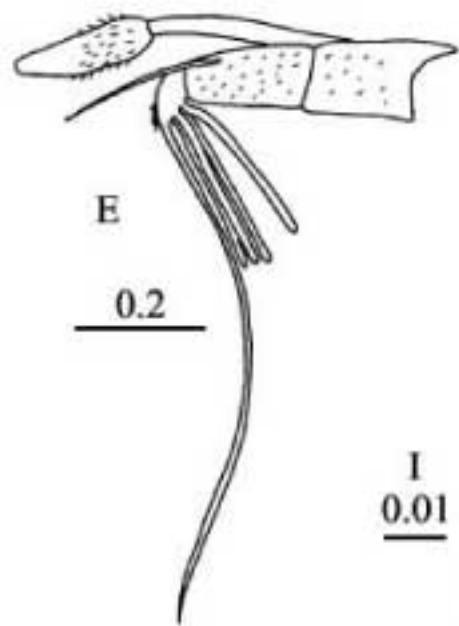
Global



*Orthoconchoecia haddoni*

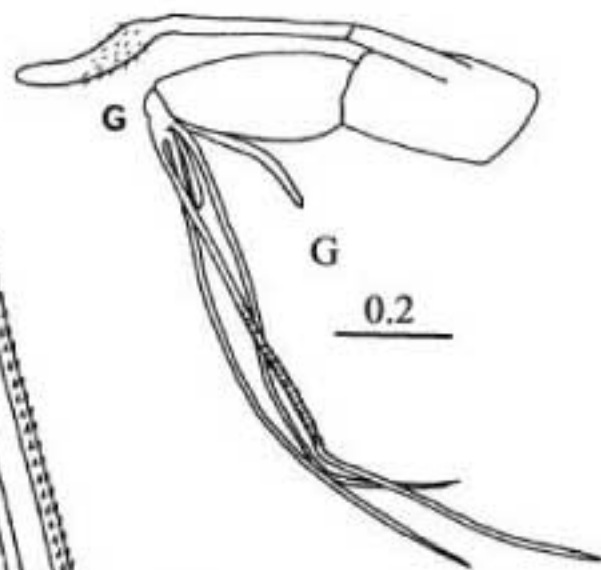


A



E

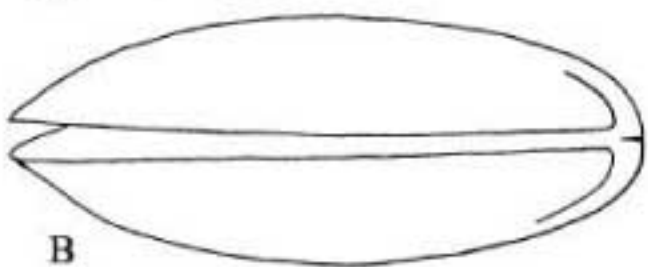
0.2



G

G

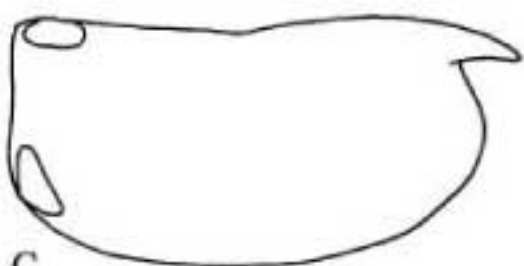
0.2



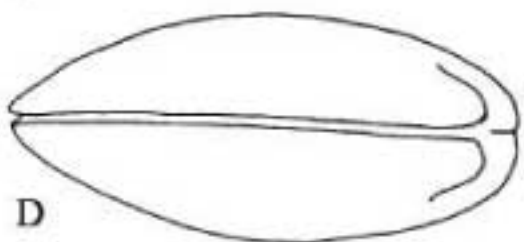
B

1

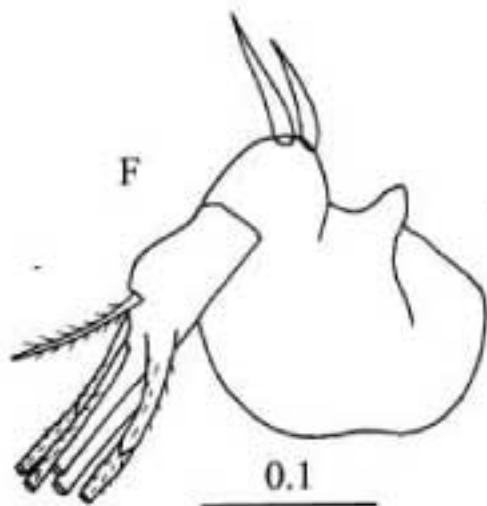
I  
0.01



C

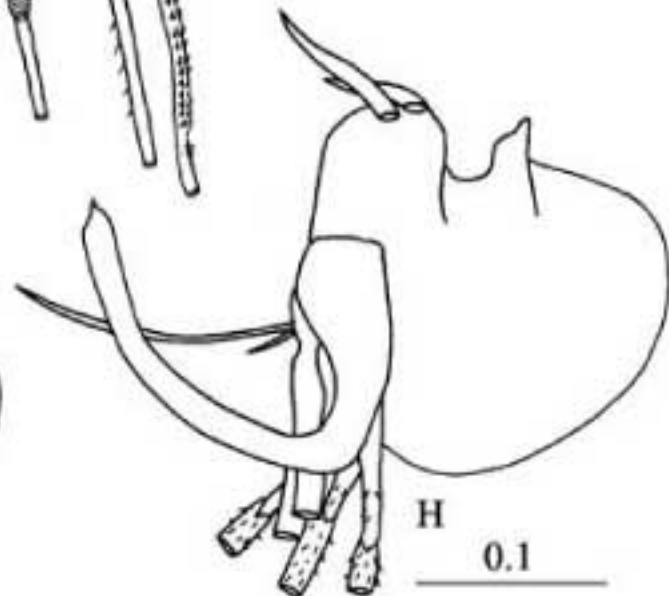


D



F

0.1



H

0.1

### Key to drawings

Adult carapaces (A,B females, C,D males)

Details of the first antennae and frontal organs and the endopodite of the left second antennae of females (E and F) and males (G and H)

Details of the armature of the male first antenna setae (I).

*Orthoconchoecia haddoni* (Brady and Norman, 1896)

Records: 238 (+7)

This is a species was originally described from the N. Atlantic from west of Ireland, and has been regularly reported from temperate latitudes between 30 and 60°. It is a shallow mesopelagic species that also abounds in the upwelling regions along the Chilean and NW and SW African coasts. The Chilean population has been described as a distinct subspecies (*O. haddoni marchilensis* Martens, 1979) and the population from the NW African coast is also distinct, being described as a small 'southern form' (e.g. Angel, 1970). It seems possible that the records off E. Africa are outliers of another subpopulation associated with the Somali Current upwelling. In the Southern Ocean most records are from north of the Subantarctic Front, but several have come from south of the Polar Front. It seems possible that many of these populations are currently isolated, and may merit specific status, in which case only the North Atlantic population would have to be regarded as *O. haddoni sensu strictu*. The sizes of the Southern Ocean and North Atlantic are indistinguishable.

<b>Southern Ocean</b>	<b>n</b>	<b>Mean mm</b>	<b>s.d.</b>	<b>Range mm</b>
<b>Female</b>	191	2.93	0.098	2.52-3.16
<b>Male</b>	180	2.48	0.067	2.32-2.64
<b>A-1</b>	8	1.87	0.078	1.76-1.94
<b>A-2</b>	7	1.17	0.044	1.10-1.24
<b>A-3</b>	1			0.84

<b>NE Atlantic</b>	<b>n</b>	<b>Mean mm</b>	<b>s.d.</b>	<b>Range mm</b>
<b>Female</b>	111	2.75	0.079	2.54-2.98
<b>Male</b>	169	2.23	0.059	2.12-2.36
<b>A-1</b>	1274	1.71	0.072	1.54-1.94
<b>A-2</b>	2790	1.10	0.043	0.98-1.22
<b>A-3</b>	2373	0.73	0.037	0.56-0.94