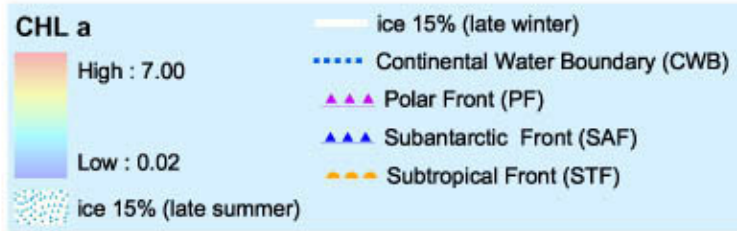
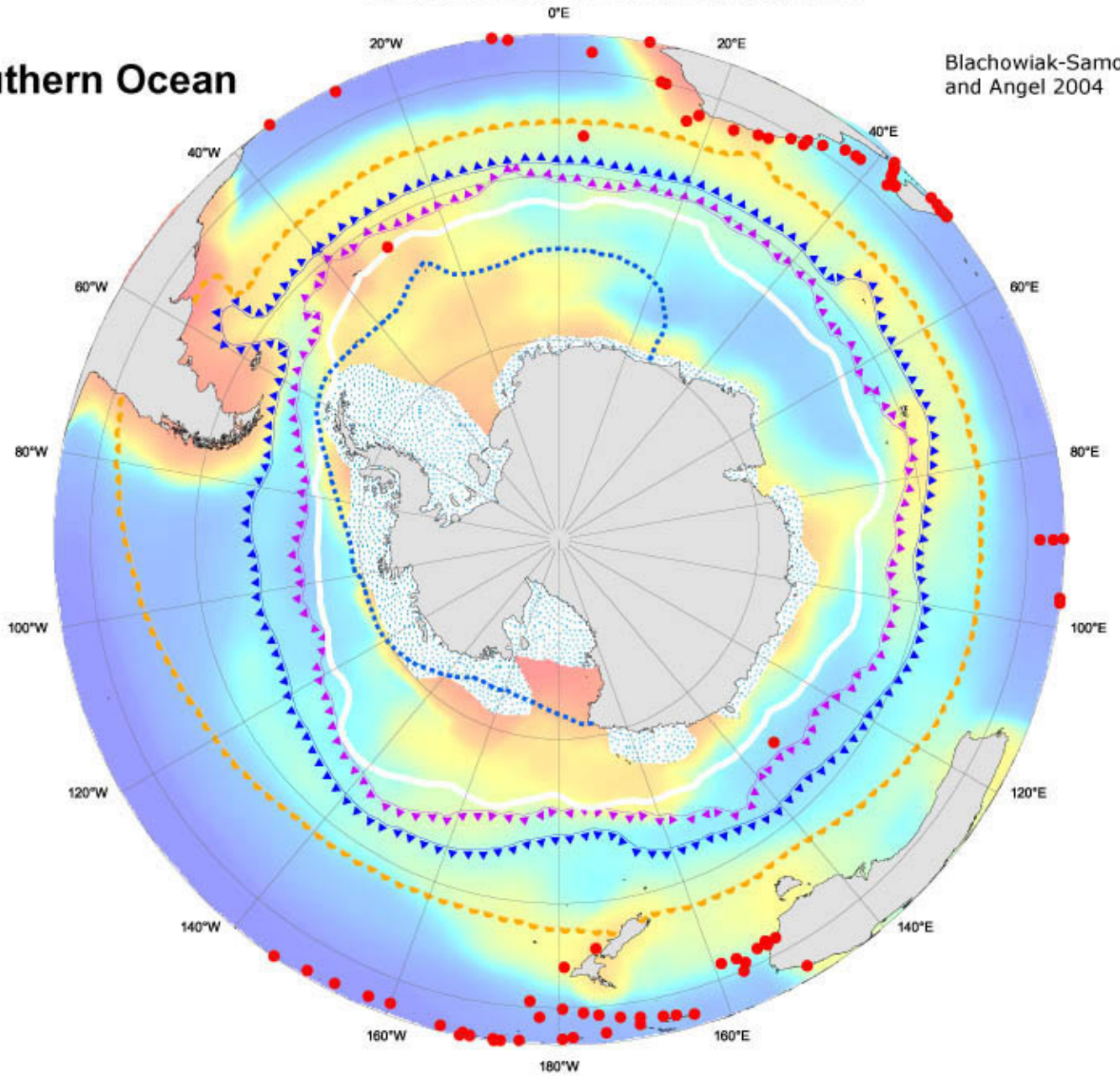


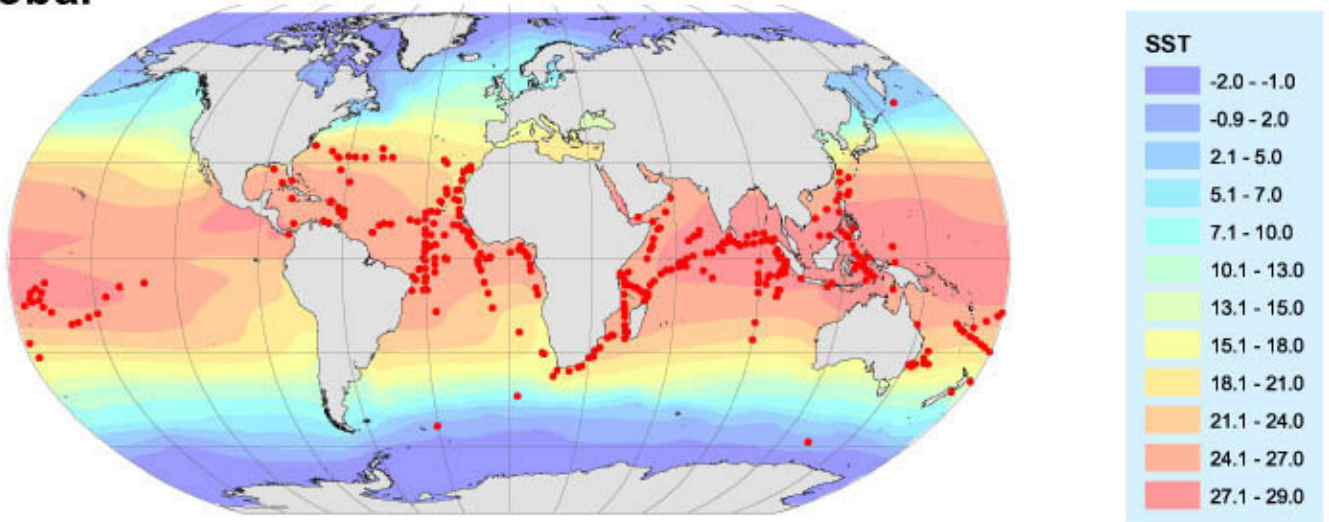
● *Orthoconchoecia atlantica*

Southern Ocean

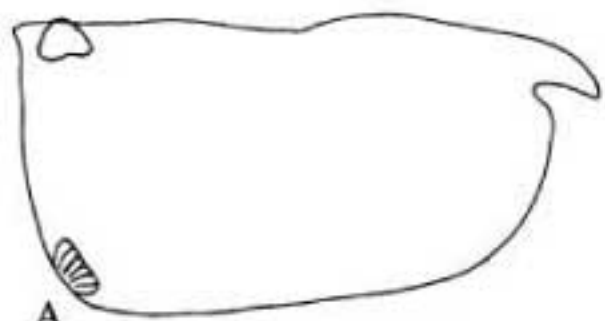
Blachowiak-Samolyk and Angel 2004



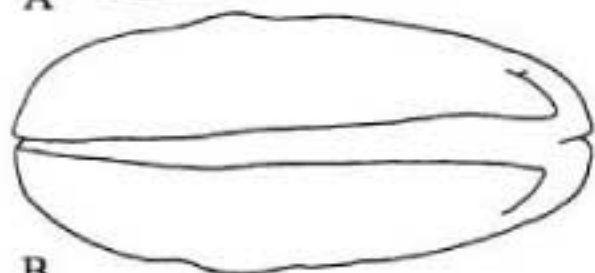
Global



*Orthoconchoecia atlantica*

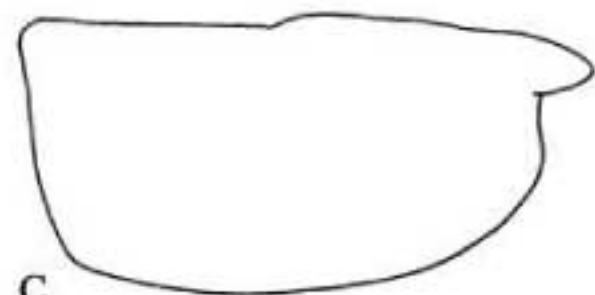


A

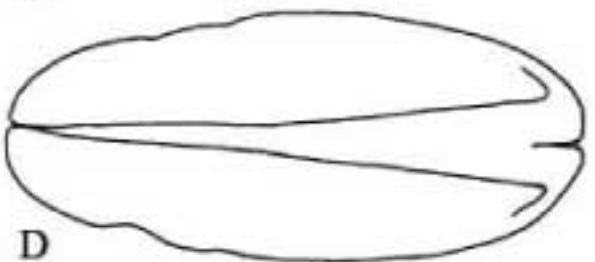


B

2



C

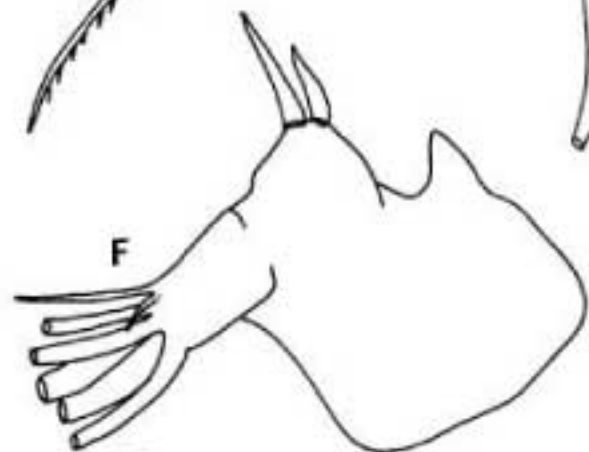


D



E

0.2



F

F

0.2



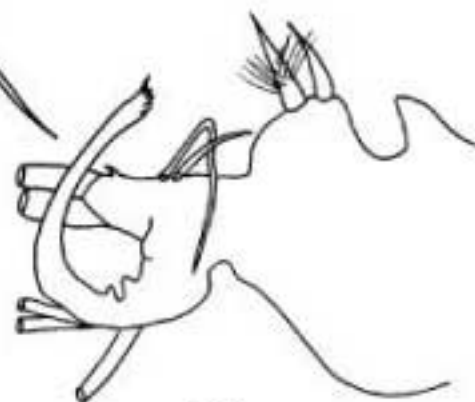
I

0.1



G

0.2



H

0.2

### Key to drawings

Adult carapaces (A,B females, C,D males)

Details of the first antennae and frontal organs and the endopodite of the left second antennae of females (E and F) and males (G and H)

Details of the armature of the male first antenna setae (I).

*Orthoconchoecia atlantica* (Lubbock, 1856)

Records: 386

Records of this large striking mesopelagic species are largely restricted to latitudes of  $<35^\circ$  in all oceans. However, there are two records from south of the Polar Front, both of which are old *Discovery* stations and need to be re-examined. Poulsen (1973) noted that sizes of this species are smaller in the Pacific and Indian Oceans than in the Atlantic, and these differences are reflected in the size ranges given below.

North Atlantic	n	Mean mm	s.d.	Range mm
Female	261	3.71	0.122	3.40-4.00
Male	176	3.66	0.107	3.44-3.92
A-1	33	2.51	0.107	2.32-2.72
A-2				

Indian Ocean	n	Mean mm	s.d.	Range mm
Female	19	3.34	0.108	3.16-3.56
Male	10	3.23	0.094	3.04-3.40
A-1	1	2.64		
A-2				