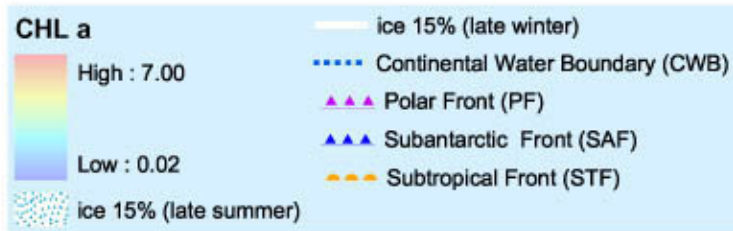
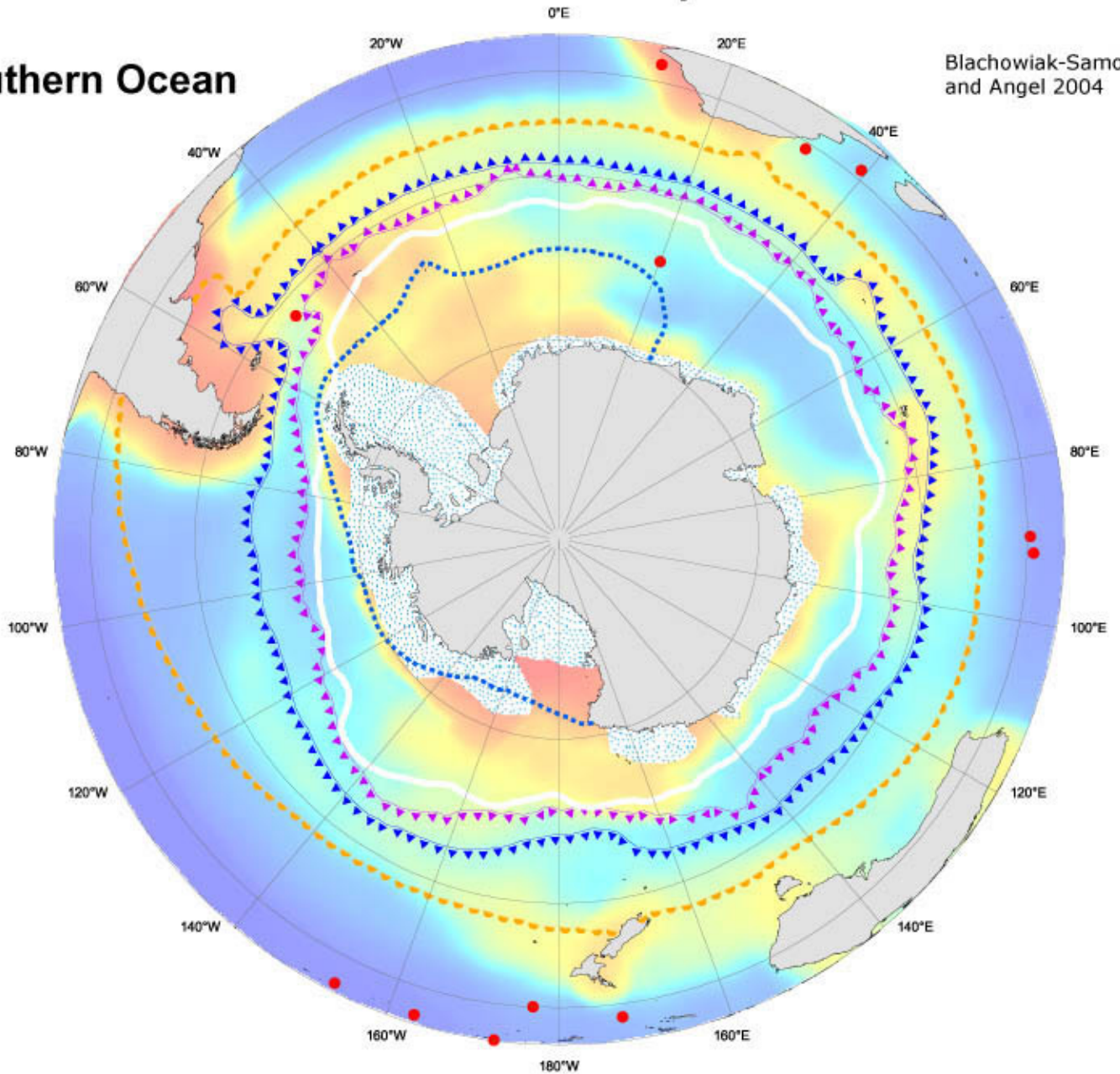


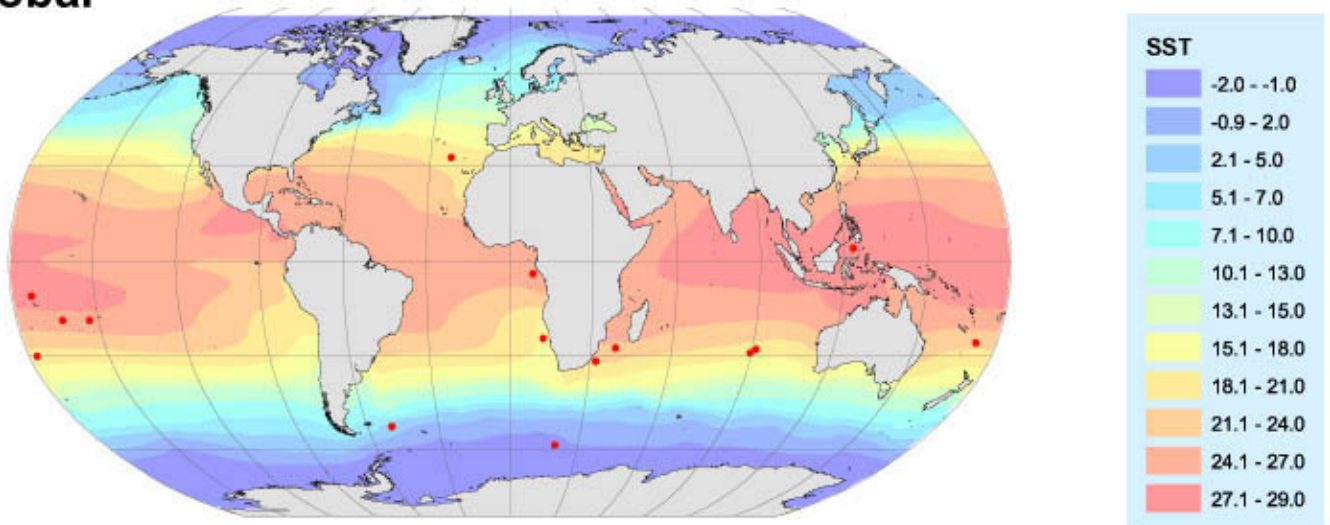
● *Conchoecissa squamosa*

Southern Ocean

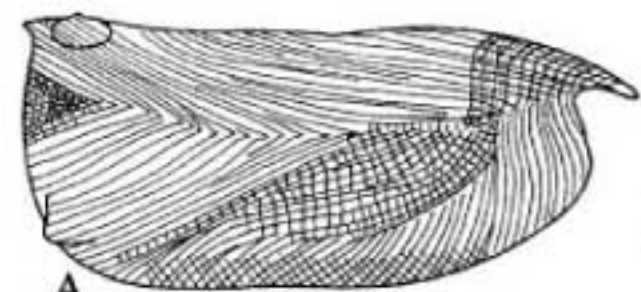
Blachowiak-Samolyk and Angel 2004



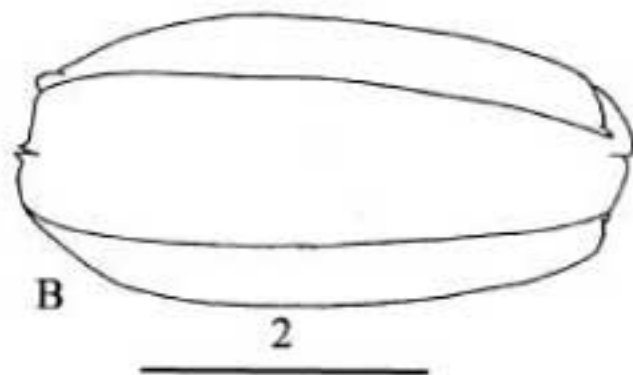
Global



*Conchoecissa squamosa*



A

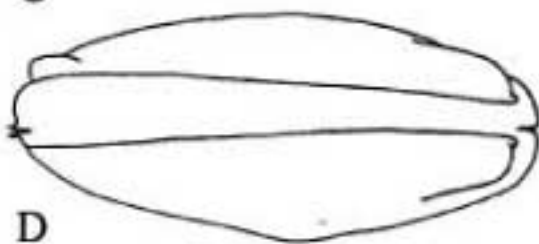


B

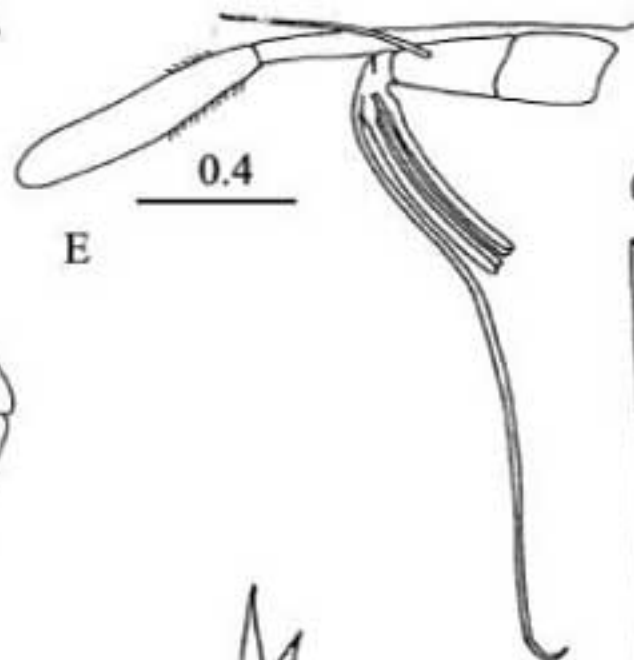
2



C

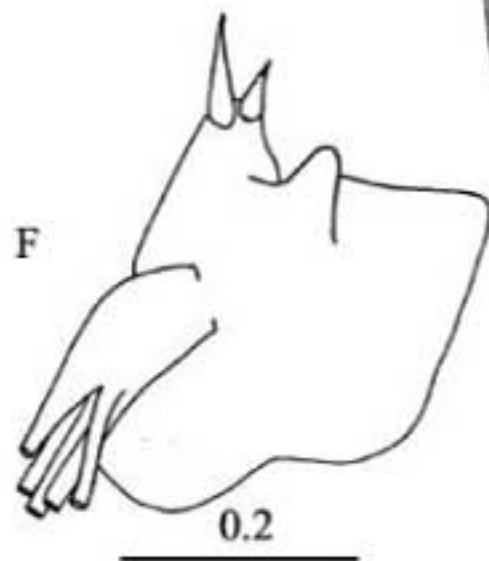


D



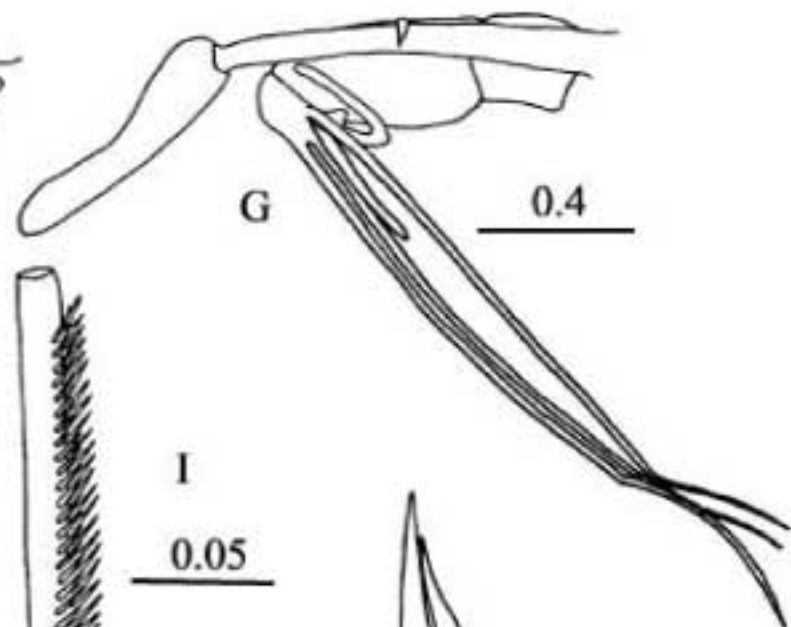
E

0.4



F

0.2



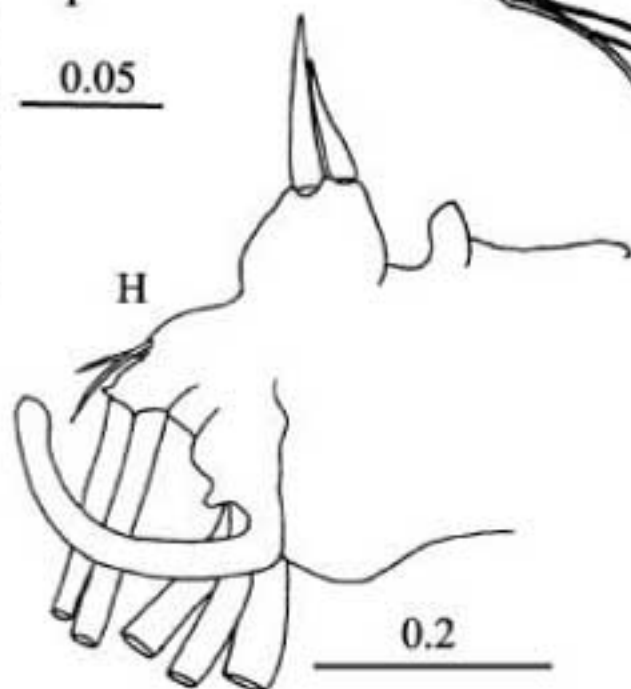
G

0.4



I

0.05



H

0.2

**Key to drawings**

Adult carapaces (A,B females, C,D males)

Details of the first antennae and frontal organs and the endopodite of the left second antennae of females (E and F) and males (G and H)

Details of the armature of the male first antenna setae (I).

*Conchoecissa squamosa* (Müller, G.W., 1906)

Records: 15

A large species with a carapace highly ornamented with rectangular sculpture, but lacks the developments of the spines at the posterior dorsal corners of the carapace valves and of the rostral processes seen in other members of the genus. It has been reported infrequently from widespread regions of the global ocean, including one station well south of the Polar Front in the Southern Ocean.

	<b>n</b>	<b>Mean mm</b>	<b>s.d.</b>	<b>Range</b>
<b>Female</b>	1			4.28
<b>Male</b>	1			3.88
<b>A-1</b>	0			